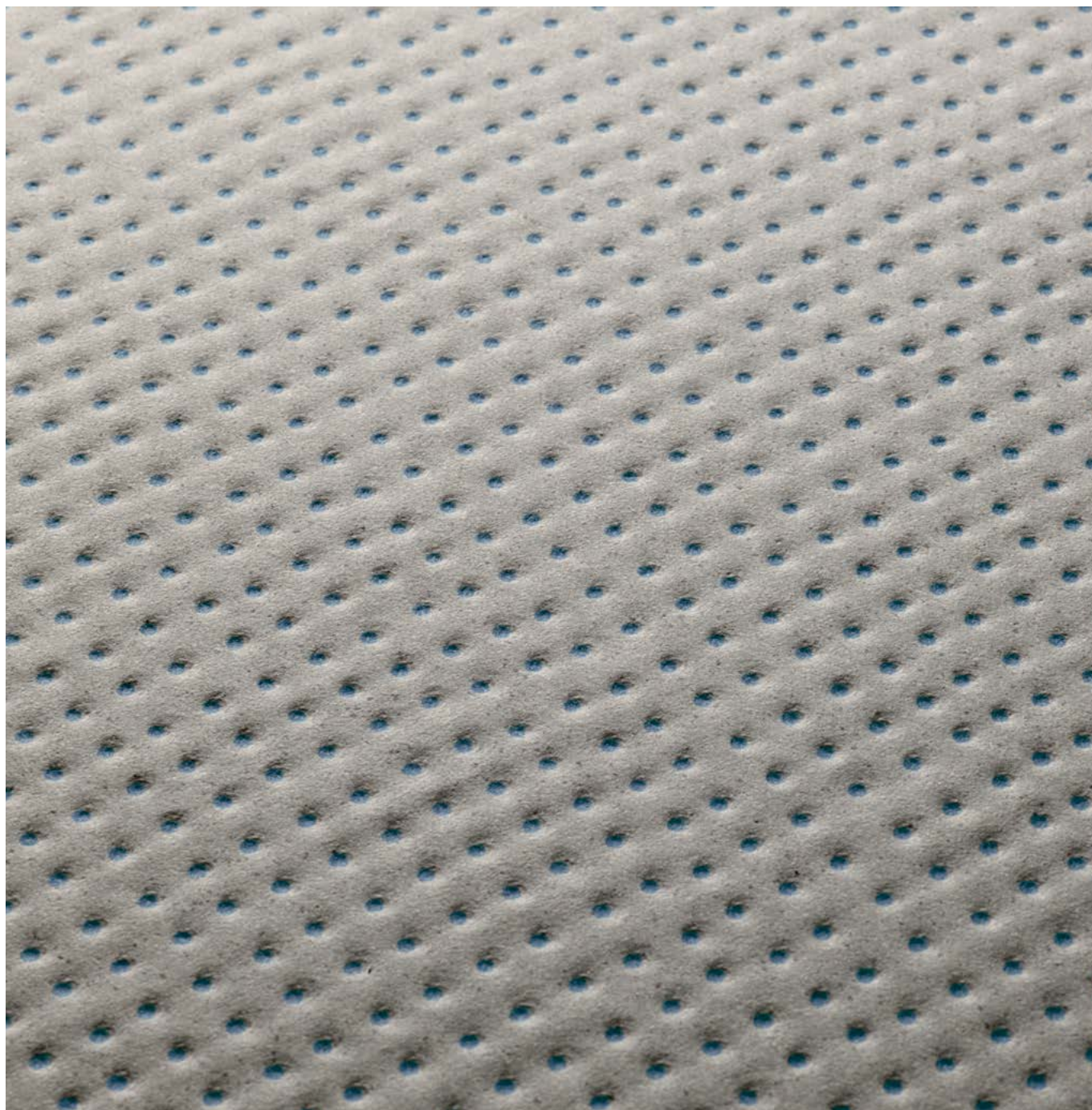


MUTINA

# Pico

by Ronan & Erwan Bouroullec



EN

General information  
Laying and maintenance tips  
Colors  
Technical features  
Packing



# General information

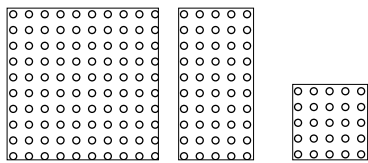
collection	Pico
design	Ronan & Erwan Bouroullec, 2011 – 2015 – 2021
production	Industrial
material	Unglazed homogeneous porcelain stoneware
features	Squared and rectified slabs each one exactly the same as the others
thickness	12 mm 10,5 mm
nominal sizes	120·120 cm (47"· 47") 60·120 cm (24"· 47") 60·60 cm (24"· 24")
specification	<ul style="list-style-type: none"> <li>- 4 base colours: Blanc, Gris, Argile, Satin</li> <li>- 2 relief and bas-relief 1,5 mm dotted textures (UP and DOWN)</li> <li>- Mixed colour tones clay to achieve a materic and natural feeling</li> <li>- Silk-screen decoration (no digital printing) with perfectly centered colour dots</li> <li>- Continua technology pressing process after decoration</li> </ul>
complementary pieces	Step, Corner tile, Skirting
awards	Red Dot Design Award 2012, Selected for Adi Design Index 2012
patents	Registered design n° 001912999-0011 – date of registration: 06/09/2011
category	UNI EN 14411 App G (BIA group) UGL

## PICO DOWN



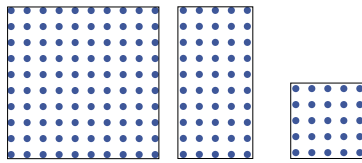
section

### down natural



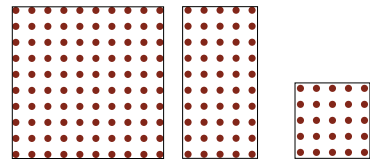
120·120 cm 47"· 47"  
60·120 cm 24"· 47"  
60·60 cm 24"· 24"

### blue dots



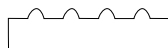
120·120 cm 47"· 47"  
60·120 cm 24"· 47"  
60·60 cm 24"· 24"

### red dots



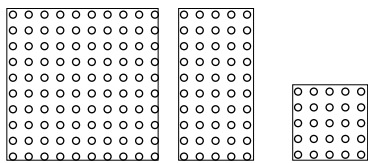
120·120 cm 47"· 47"  
60·120 cm 24"· 47"  
60·60 cm 24"· 24"

## PICO UP



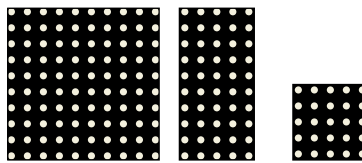
section

### up natural



120·120 cm 47"· 47"  
60·120 cm 24"· 47"  
60·60 cm 24"· 24"

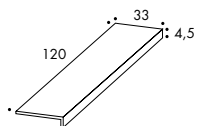
### up



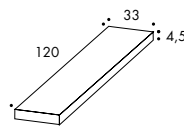
120·120 cm 47"· 47"  
60·120 cm 24"· 47"  
60·60 cm 24"· 24"

## complementary pieces

step  
33·120·4,5 cm  
13"· 47"· 1 7/8"

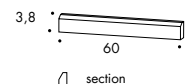


corner tile  
33·120·4,5 cm  
13"· 47"· 1 7/8"



skirting  
3,8·60 cm  
2"· 24"

available only  
in down natural



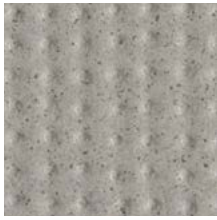
section

## Laying and maintenance tips

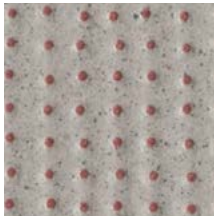
use	Floor, wall – indoor, outdoor.
installation	For an even, smooth shading effect when laying, alternate material from several different boxes. The double spreading technique is recommended for the 120x120 size.
recommended adhesive	Adhesive for porcelain stoneware.
recommended joints	2mm joints. Use wedges to fix the caliber differences in work size between tiles.
recommended fillers	Cement-based grout / epoxy grout. Remove all traces of grout carefully before it dries completely. <a href="#">Download the Grout Tables.</a>
cleaning at the end of installation	CEMENT-BASED GROUT: Buffered acid (e.g. DETERDEK PRO by FILA, or similar). Wet the floor with water, dilute the product 1:5 with water and pour it on the floor. Wait for 2 or 3 minutes then use a white scotch Brite pad and rinse well with clean water. EPOXY GROUT: Alkaline detergent (e.g. FILA CR10 by FILA). FILA CR10: apply pure, wait for 30 minutes then use a green scotch Brite pad. SILICONE: Solvent for silicone (e.g. FILA ZERO SIL.). Pour it straight onto the stain, wait for 20 minutes and remove the mark using scotch Brite. PAINT: Can usually be removed using water, but if resin-based paints or particular enamels have been used, it is best to ask the manufacturer which solvent is most suitable. RUST: stain remover es. FILA NO RUST. Apply the product onto the stain, leave for 15 minutes, remove the residue and rinse thoroughly.
general cleaning (installed tiles)	You are recommended to use ordinary neutral detergent diluted in water. Avoid using acid or alkaline products, waxes and/or impregnants. During ordinary cleaning it is recommended to use extremely abrasive items (such as scourers and iron or steel sponges) as little as possible. This recommendation must be adhered to rigorously in the case of tiles with a glossy surface finishing as they are more susceptible to the risk of scuffs, scratches and loss of shine, etc. In the event of heavy dirt or particularly textured surfaces, use an alkaline detergent and rinse after washing. For large surfaces, the use of a floor washing machine is recommended. During every-day cleaning procedures, it is necessary to remember that certain types of dirt (dust, sand) increase the abrasive effect of foot-traffic. Therefore we recommend that you avoid bringing in this type of dirt, which comes in from the outside, by placing a door-mat at the entrance.
calibers 09 (real size) thickness 12mm	120cm x 120cm -> 1190mm x 1190mm 60cm x 60cm -> 594mm x 594mm 60cm x 120cm -> 594mm x 1190mm
calibers I (real size) thickness 10,5mm	120cm x 120cm -> 1196mm x 1196mm 60cm x 60cm -> 597mm x 597mm 60cm x 120cm -> 597mm x 1196mm

# Colours

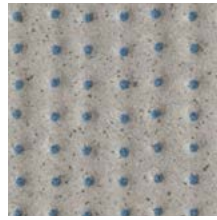
## GRIS



Down Natural



Red Dots



Blue Dots

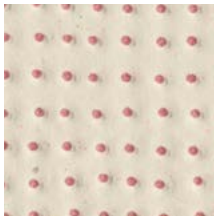


Up Natural

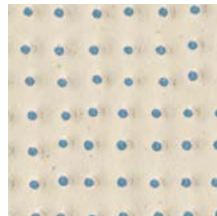
## BLANC



Down Natural



Red Dots

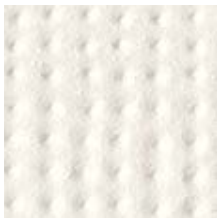


Blue Dots



Up Natural

## SATIN



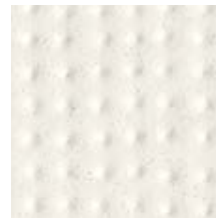
Down Natural



Red Dots

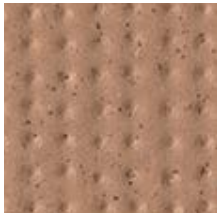


Blue Dots



Up Natural

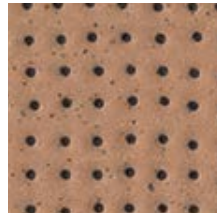
## ARGILE



Down Natural



Red Dots

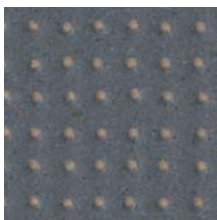


Blue Dots



Up Natural


## BLUE



Up Blue

For information about the available grouts, please contact the sales department.

# Technical features

STANDARD	FEATURES	VALUE REQUIRED	PICO
ISO 10545/2	SIZES  length and width thickness straightness of edges wedging flatness	  ± 0,6% ± 5% ± 0,5% ± 0,6% ± 0,5%	  in conformity with standard
ISO 10545/3	water absorption	< 0,5%	0,06%
ASTM C373		< 0,5%	0,06%
ISO 10545/4	breaking strength	≥ 35 N/mm	61,2 N/mm <sup>2</sup>
ISO 10545/6	resistance to deep abrasion	< 175 mm <sup>3</sup>	in conformity
EN 101	surface hardness (scala mohs)	> 5	8
ISO 10545/9	resistance to thermal shock	no visible alteration	resistant
ASTM C484		no samples must show visible defects	unaffected
ISO 10545/12	frost resistance	no visible alteration	resistant
ASTM C1026		unaffected	unaffected
ISO 10545/13	resistance to chemical attacks	no visible alteration	resistant
ASTM C650			unaffected
ISO 10545/14	stains resistance	minimum 3	5
DIN 51130-04	slip resistance	medium values 6÷10° R9 10÷19° R10 19÷27° R11 27÷35° R12 > 35° R13	UP R11 DOWN R11 SATIN UP R10 SATIN DOWN R9
DIN 51097			UP B DOWN A SATIN UP B SATIN DOWN A
DCOF		> 0,42	UP 0,59 DOWN 0,70 SATIN UP 0,47 SATIN DOWN 0,55
Pendulum BS7976-2			UP 53 dry - 38 wet DOWN 49 dry - 31 wet SATIN UP 58 dry - 29 wet SATIN DOWN 57 dry - 28 wet
LEED CERTIFICATION 4.1			20% recycled material
ENVIROMENTAL MANAGEMENT SYSTEM ISO 14000 E ISO 9001			
 QB UPEC			available upon request
VOC Emission			available upon request
Declaration of Contents			available upon request
EPD			available upon request
SDS			available upon request
BPD3			available upon request
HPD			available upon request

# Packing

SIZE	PCS-SQM	SQM-PCS	PCS-PAL	KG-PCS	KG-PAL	SQM-PAL
120-120 cm	0,69	1,44	36	38,30	1379	51,84

SIZE	PCS-SQM	PCS-BOX	SQM-BOX	BOX-PAL	KG-BOX	KG-PAL	SQM-PAL
60-120 cm	1,38	2	1,44	24	38,65	928,00	34,56
60-60 cm	2,77	3	1,08	32	29,00	928,00	34,56
step 33-120-4,5 cm	-	2	2,40 ml	-	26,00	-	-
corner tile 33-120-4,5 cm	-	1	1,20 ml	-	13,50	-	-
skirting 3,8-60 cm	-	10	6 ml	-	5,00	-	-